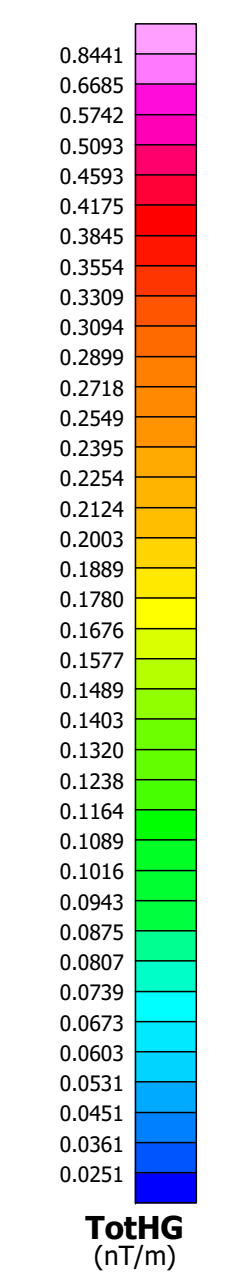
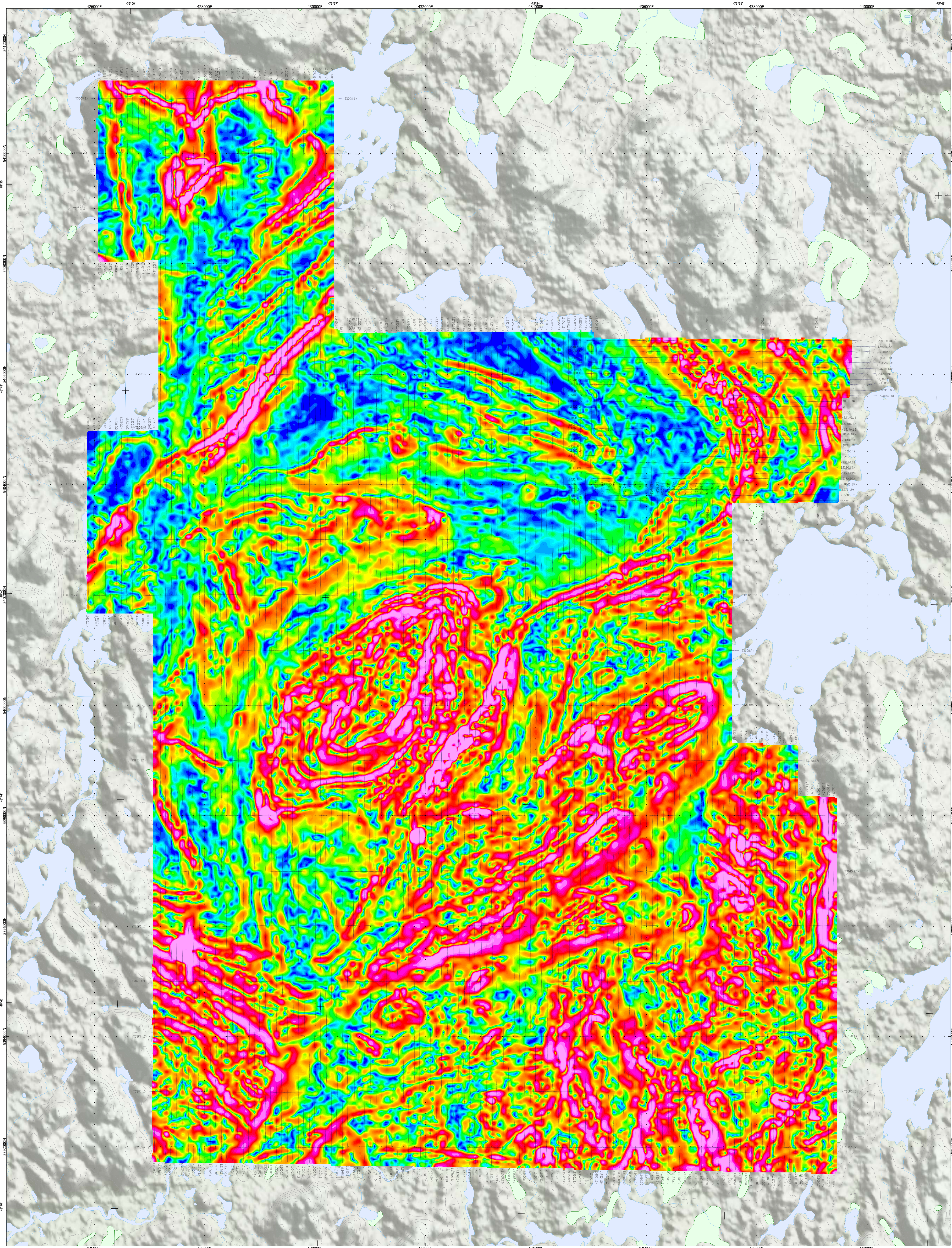


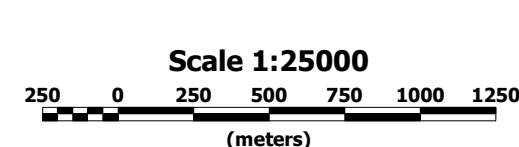
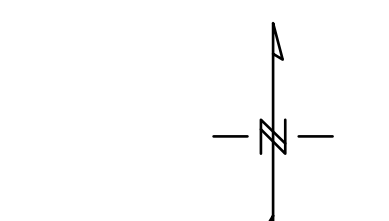
SURVEY SPECIFICATIONS:
 Survey Date: January 29th to February 14th, 2018
 Survey Area: Label-Sur-Quebec, QC
 Aircraft: Aerostar A-Star 350 B3 (C-PIHC)
 Survey Line Spacing: 100 Meters
 Survey Line Direction: N 0° E / N 180° E - N 90° E / N 270° E
 Tie Line Spacing: 1000 Meters
 Tie Line Direction: N 90° E / N 270° E - N 0° E / N 180° E
 Average Aircraft Terrain Clearance: 84 Meters
 EM Transmitter Loop: Towed at an average terrain clearance of 36 meters below the helicopter
 Magnetic Sensor: Towed at an average terrain clearance of 10 meters below the helicopter

INSTRUMENTS:
 Geotech Time Domain Electromagnetic System (VTEM)
 Concentric Rx/Tx Geometry
 X-Coil Diameter: 0.32m
 Z-Coil Diameter: 1.2m
 Transmitter Loop: Diameter 26 Meters
 Dipole Moment: 401,220 nA
 Transmitter Wave Form: Trapezoid, Pulse Width 7.09 ms, Base Frequency 30 Hz
 Geometrics High Sensitivity Caesium Magnetometers
 Mag Resolution: 0.02 nT at 10 samples/sec

MAP PROJECTION:
 Datum: NAD83
 Projection: Universal Transverse Mercator
 Central Meridian: 75°W (Zone 18N)
 Central Scale Factor: 0.9996
 False Easting/Northing: 500,000m
 Major Axis: 6378137.000
 Inverse Flattening: 298.25722



TOPOGRAPHIC LEGEND:
 Streams / Rivers
 Contours
 Lakes / Ponds
 Wetlands



The topographic data base was derived from 1:50,000 NRC (Natural Resources Canada) NTDR data. Background shading is derived from NASA SRTM (Shuttle Radar Topography Mission) data. Post data derived from Geocommunities 1:250,000 Canadian National Topographic database (www.geocomm.com/www.geocomm.ca)

Melkor Resources Inc.
 Maseres
 Urban-Barry, Quebec
 Geotech VTEM System
 Total Magnetic Horizontal Gradient

Flown and processed by Geotech Ltd.
 245 Industrial Parkway North,
 Aurora, Ontario, Canada L4G 4C4
 www.geotech.ca
 May, 2018