

LL Gold Projects

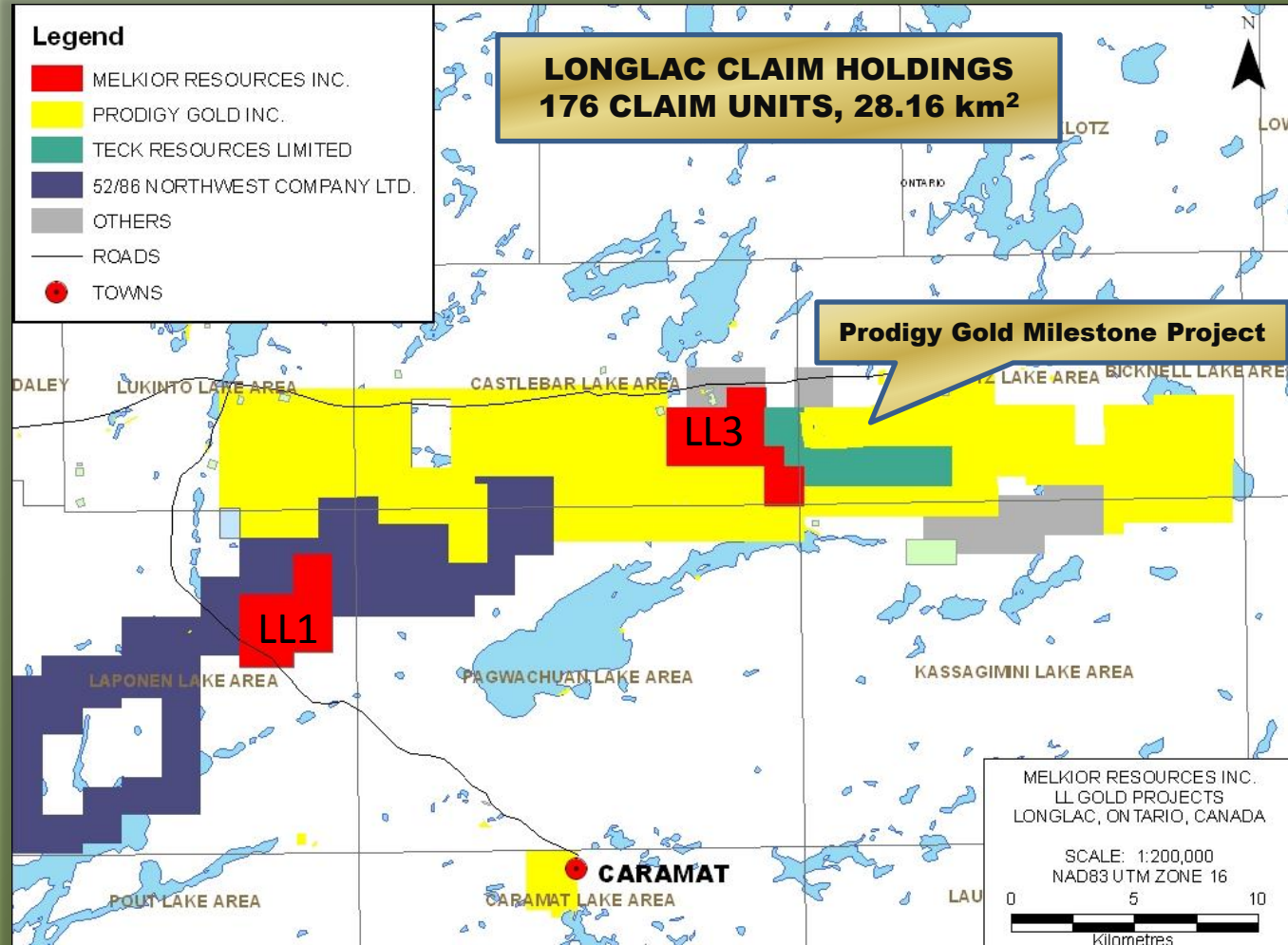
Long Lac, Ontario, Canada

Laponen Lake/Castlebar Townships

LOCATION MAP



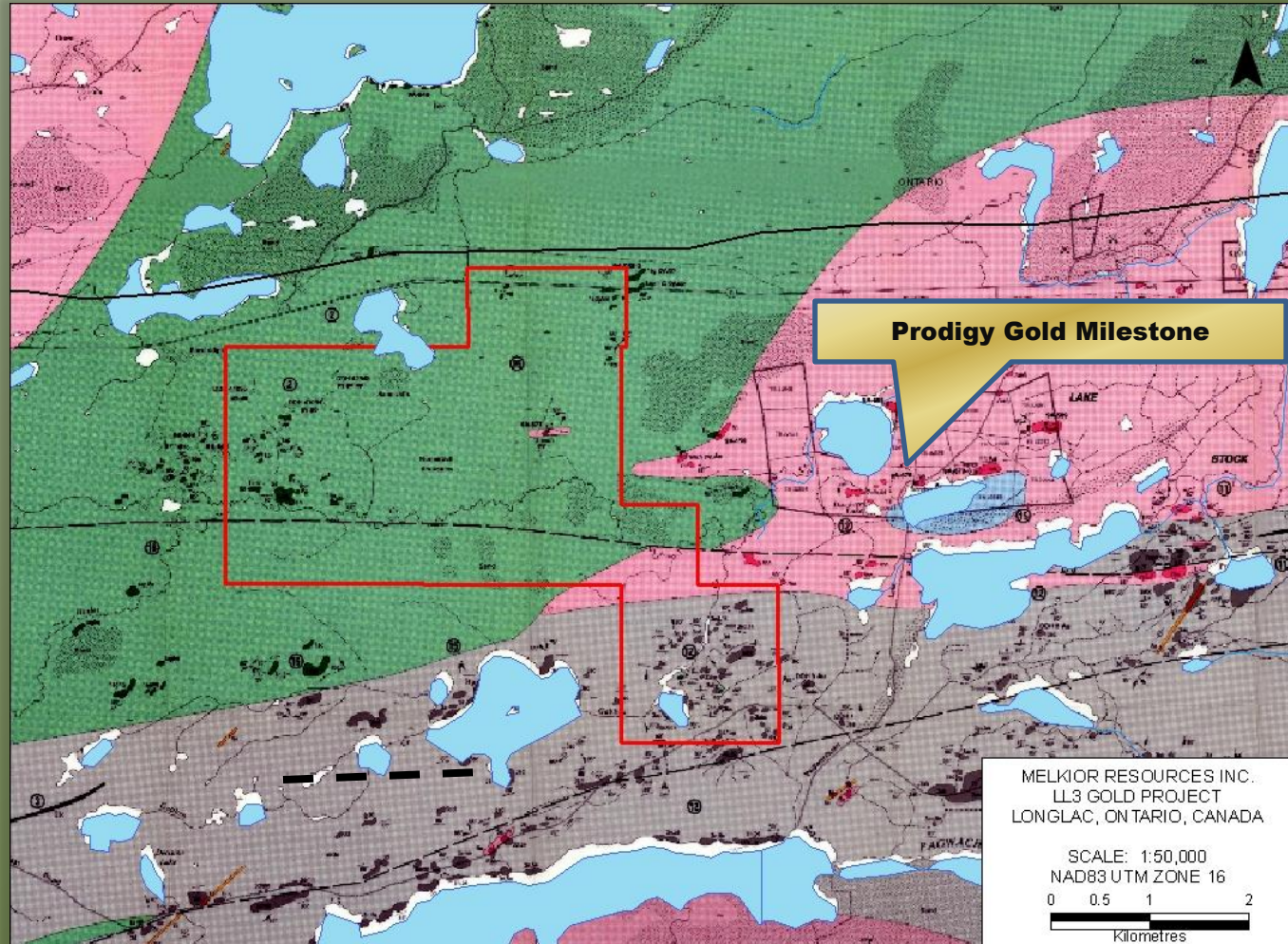
LONG LAC PROJECT LOCATIONS



LONGLAC PROJECTS

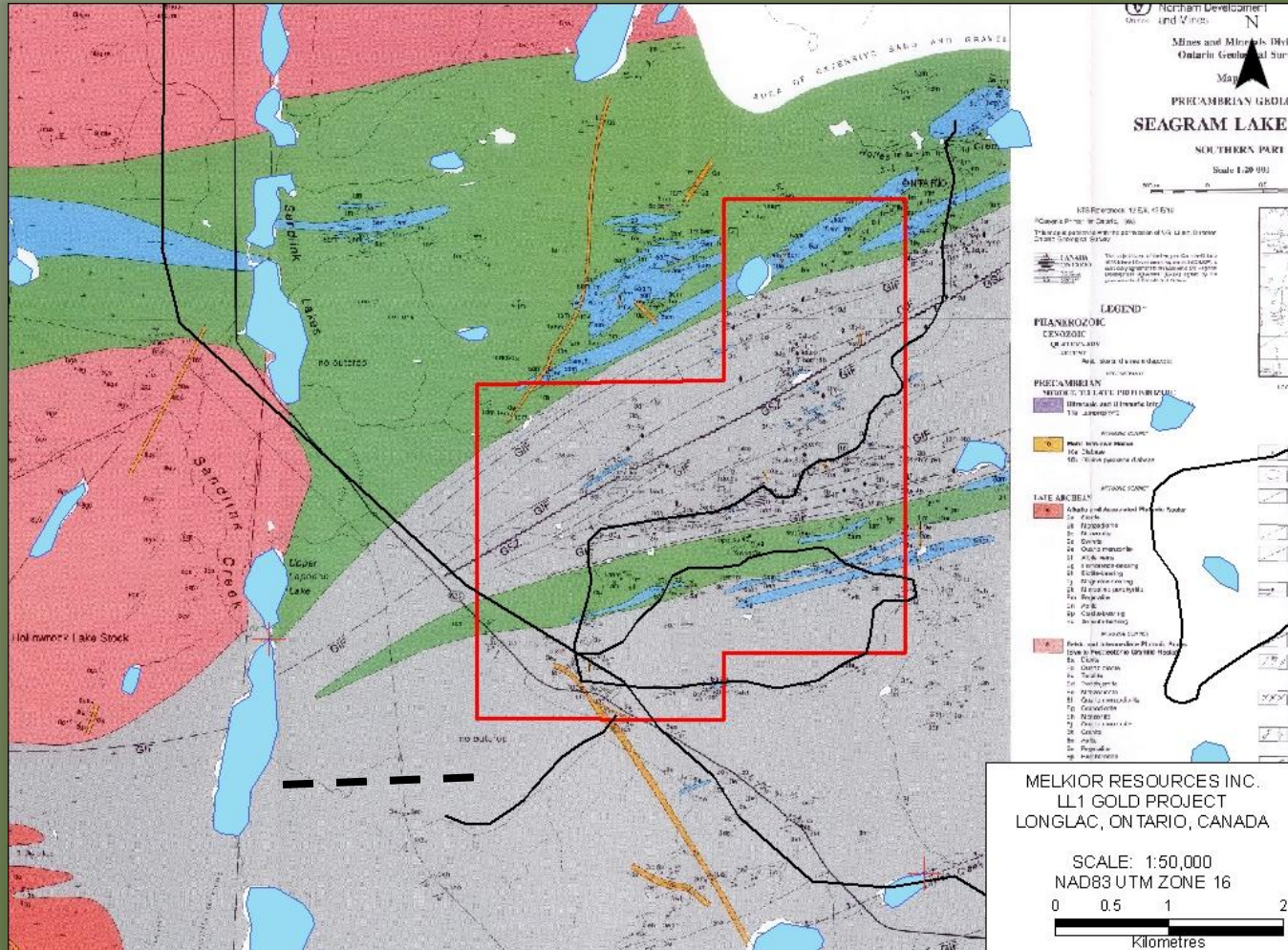
- LL3 Property lies to the immediate west of the Prodigy Gold Inc. Milestone Project.
- The easterly extension of the main gold mineralized structures of the Beardmore-Geraldton gold camp (more than 8 million ounces of gold production and identified gold resources) have been interpreted to extend through Long Lac to the vicinity of the Milestone property.
- Limited exploration in the area due to glacial cover.
- Located 50 kilometres east of Geraldton, Ontario and 30 kilometres from Long Lac.
- Excellent infrastructure and accessible year round.

LL3 PROJECT- DETAIL GEOLOGY



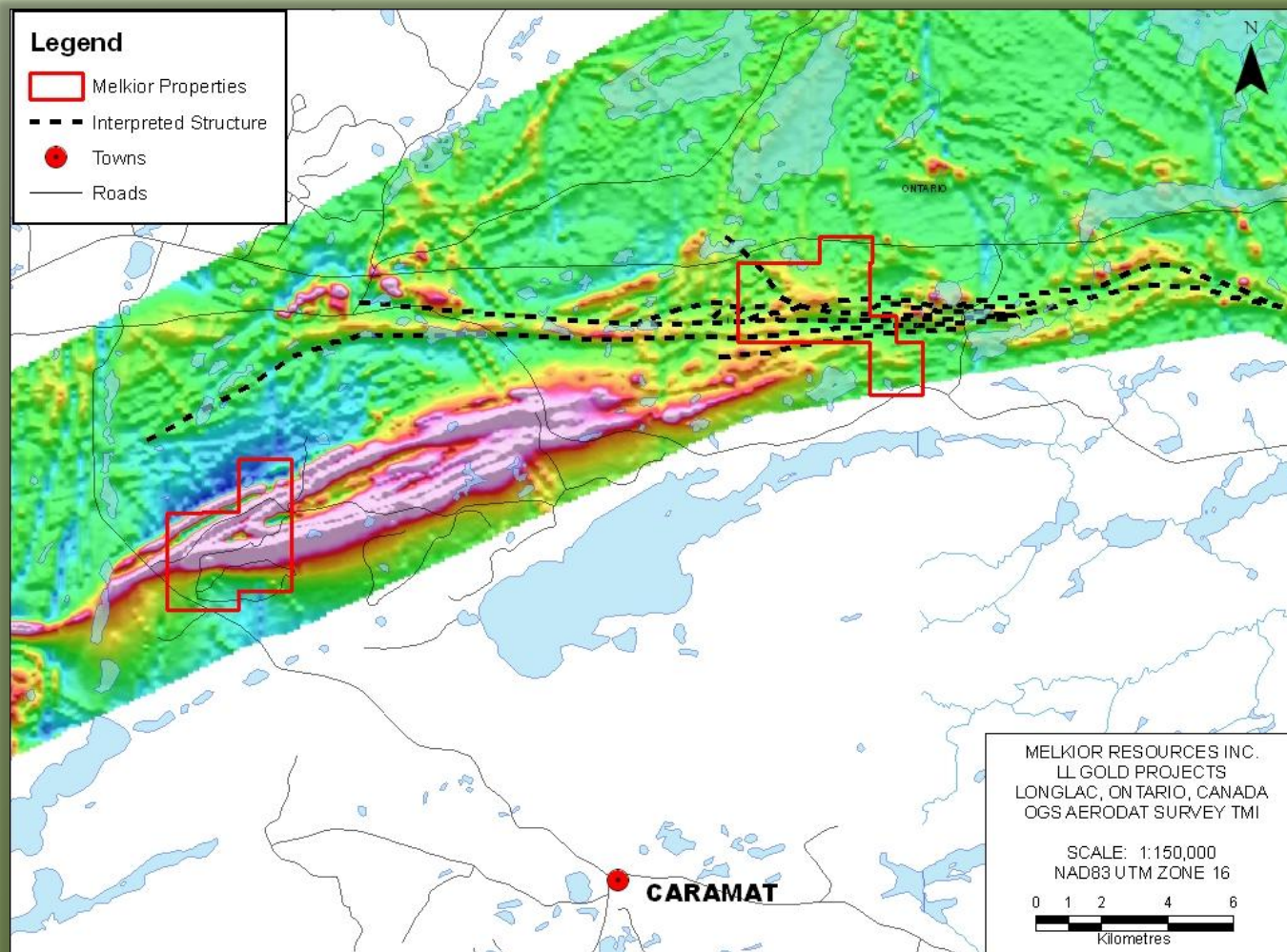
OGS MAP 2469 – KLOB LAKE

LL1 PROJECT- DETAIL GEOLOGY



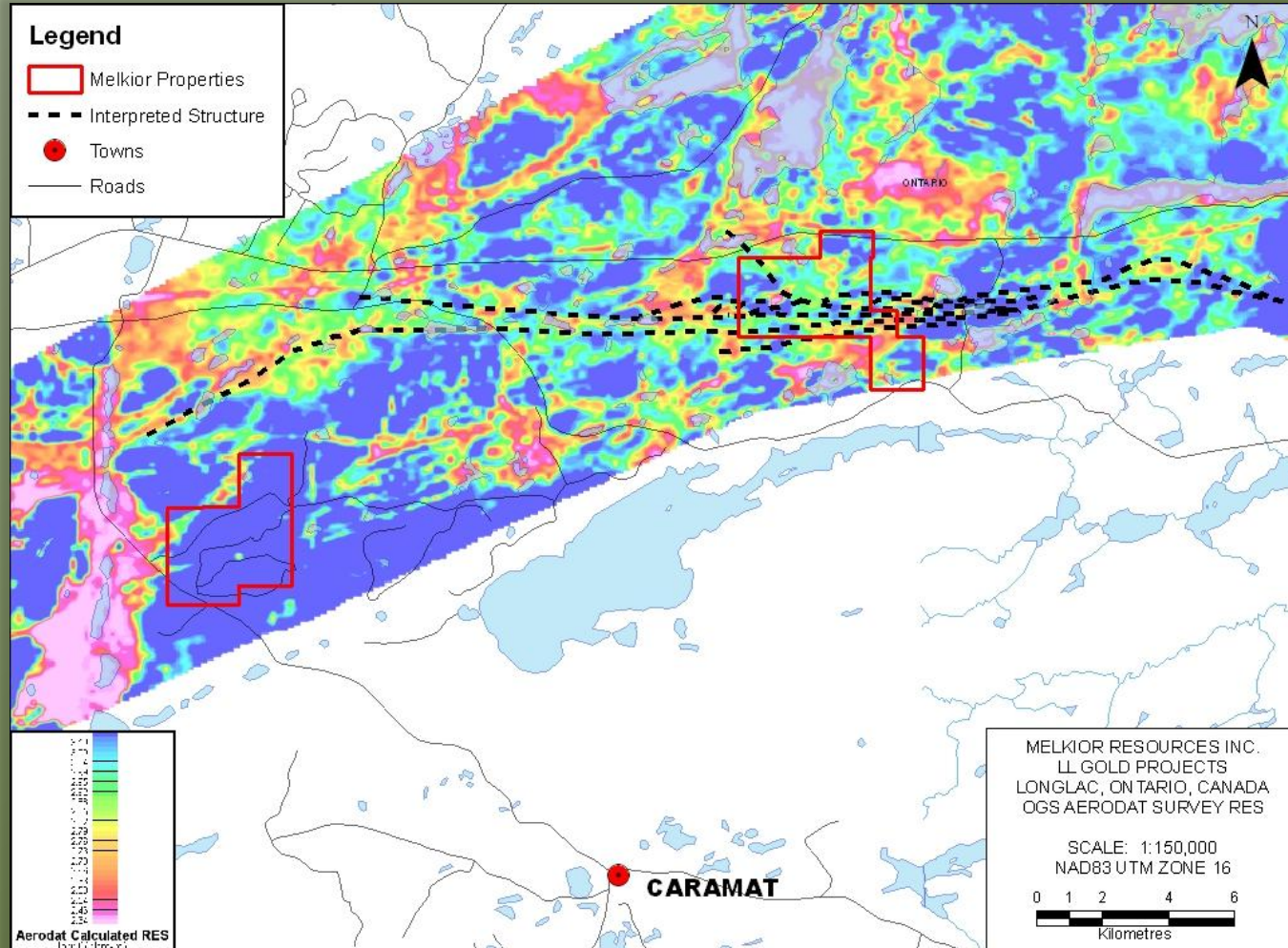
OGS MAP 2569 - PRECAMBRIAN GEOLOGY SEAGRAM LAKE AREA

LONGLAC AREA- TOTAL MAGNETIC INTENSITY



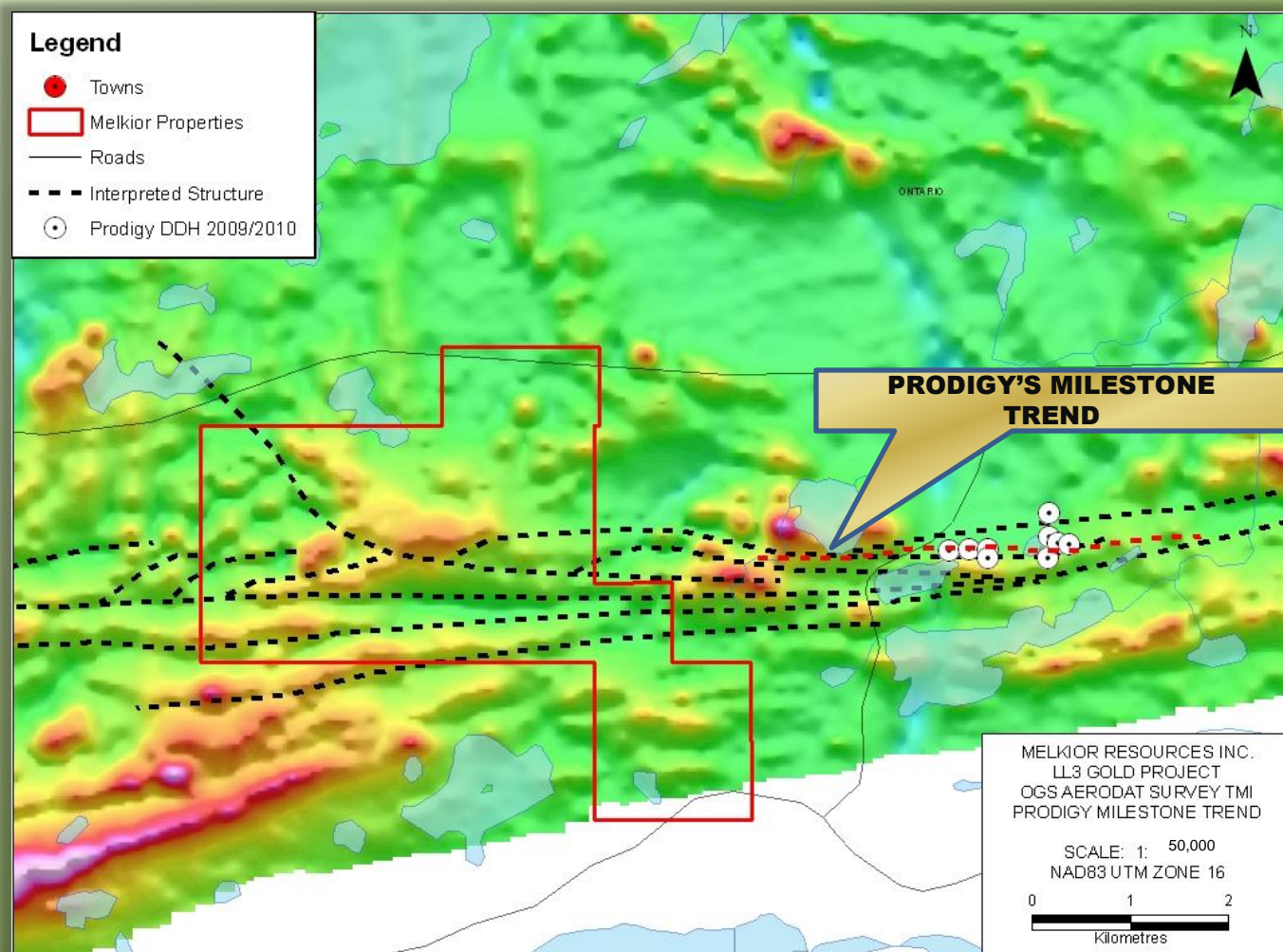
OGS AERODAT SURVEY

LONGLAC AREA- RESISTIVITY



OGS AERODAT SURVEY

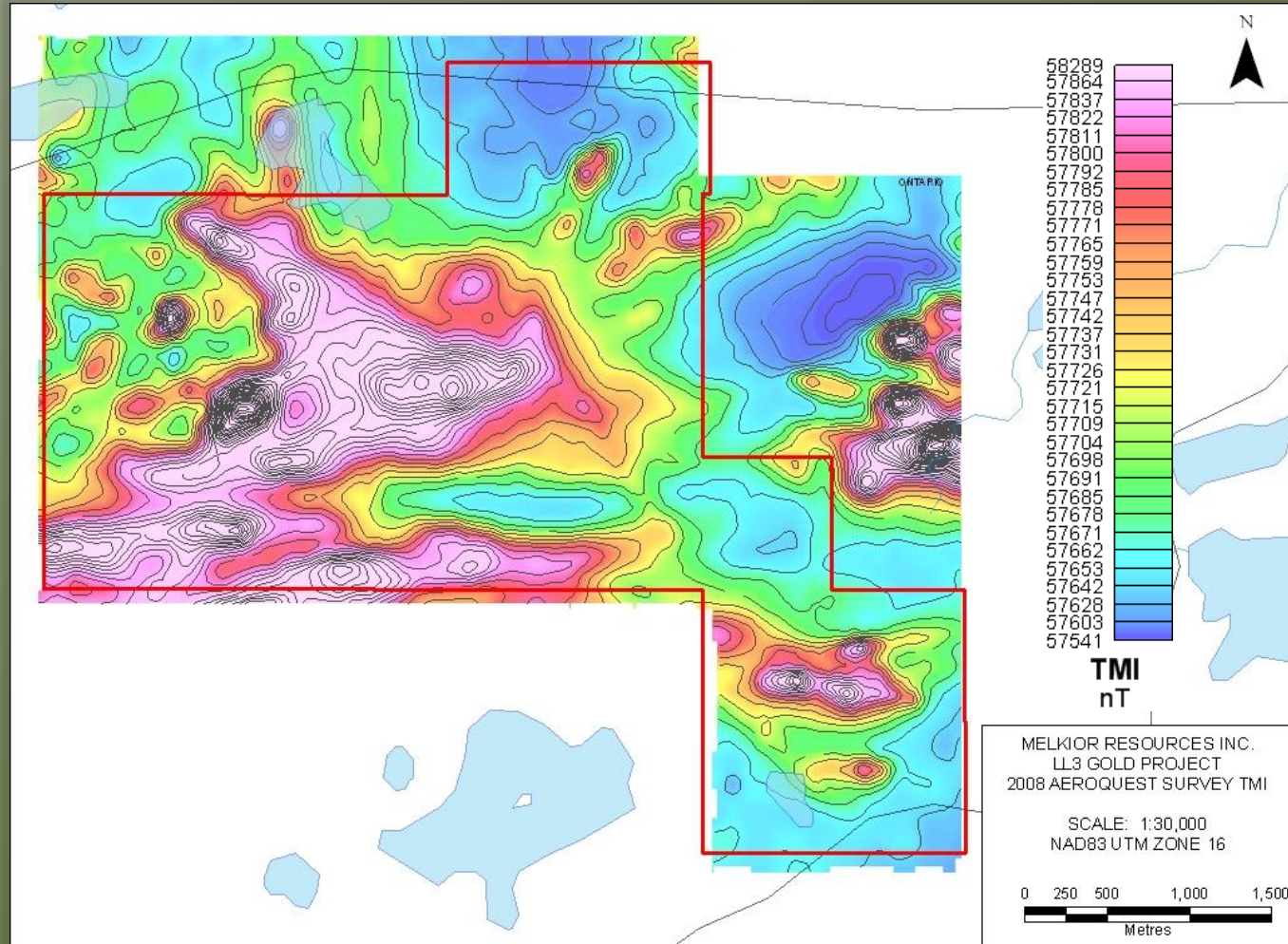
LL3 AREA – TOTAL MAGNETIC INTENSITY



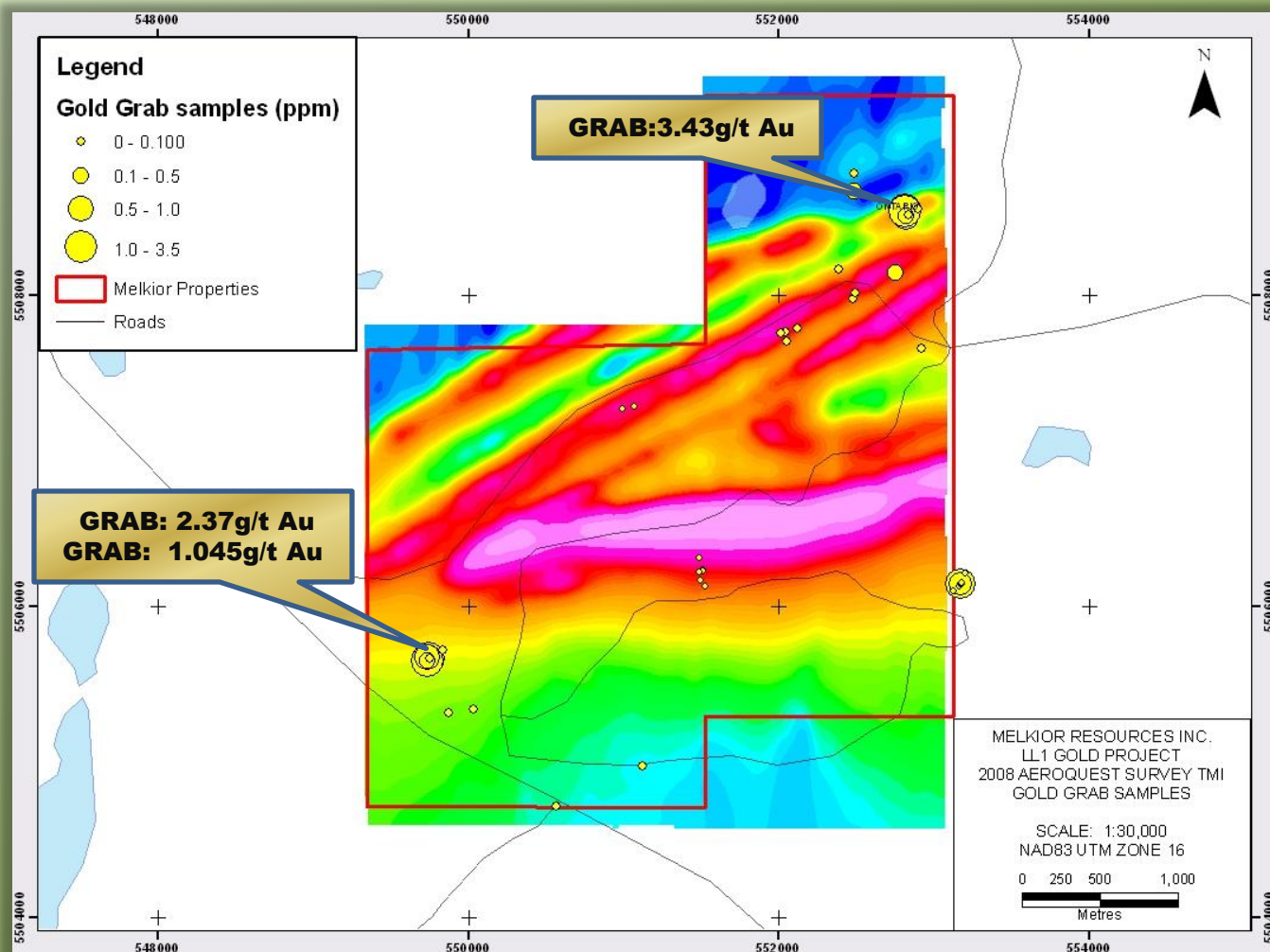
EXPLORATION PROGRAMS

- 462.45 line kilometre Aeroquest, AEROTEM III, electromagnetic survey completed in 2008.
- 26.1 line kilometre Induced Polarization (IP) survey completed in 2010 over LL3 property. 15.6 kilometres to be completed during winter of 2011.
- 3 structural zones were outlined by IP, defined by resistivity low and magnetic high.
- Targets appear to be shallow.
- 2008, 2009 and 2010 prospecting campaigns grab sample highlights: 3.43g/t Gold, 2.27g/t Gold and 1.31g/t .
- Very little outcrop exposure due to Pleistocene deposit.

LL3 – TOTAL MAGNETIC INTENSITY



LL1 – TOTAL MAGNETIC INTENSITY



**MELKIOR RESOURCES INC.
3208 RICHMOND RD
OTTAWA, ONTARIO, K2H 5B6**

TELEPHONE: (613) 721-2919

FAX: (613) 680-1091

EMAIL: melkior@rogers.com

WEB: www.melkior.com

Melkior
RESOURCES